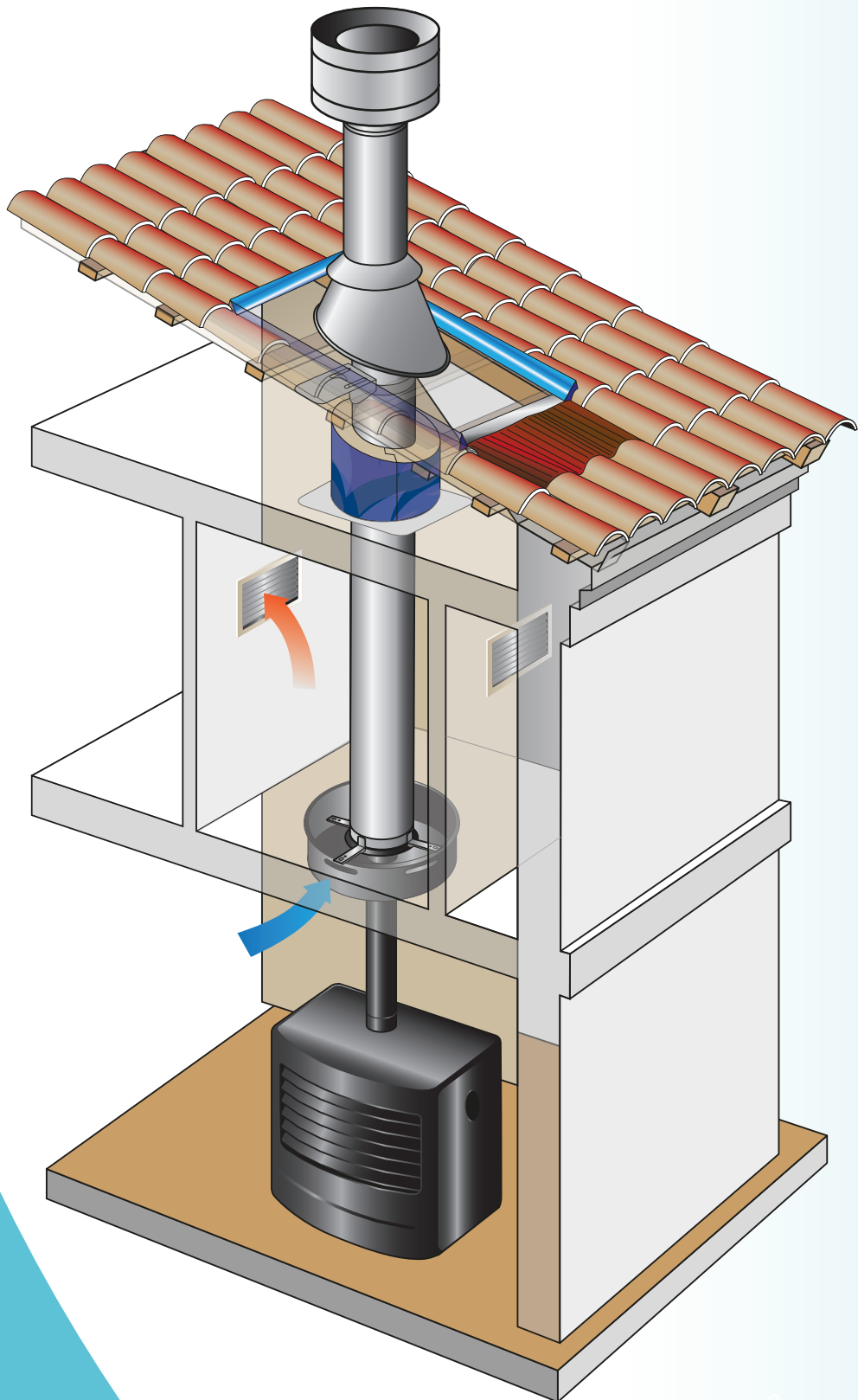


10 AC

Accesorios
Accessories
Accessoires

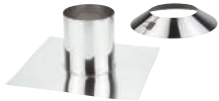


Cubreaguas, salidas de techo y accesorios
Roof flashing, rooftops and accessories
Solins, sorties de toit et accessoires

CE Especificaciones de acuerdo a la legislación europea en productos de construcción **CPR**
Specifications according to EU product regulations of construction **CPR**
*Spécifications Selon la réglementation européenne concernant les produits de construction **CPR***

SP - F - BD	Ø	80	100	110	125	130	150	180	200	230	250
DP - EI	Ø					80	100	125 - 130	150	180	200
CC	Ø				80/125	80/130	100/150	110/180	130/200		150/250
DP50	Ø									130	150

Cubreaguas inox horizontal | Horizontal steel roof flashing | *Solin inox horizontal* + Collarín | Storm collar | Collettere **75mm**



AISI 304	Ref.	2700944	2700939	4019534	4013886	2700940	2700868	2700941	2700807	2500210	2700942
	€ U.	1	1	1	1	1	1	1	1	1	1

Cubreaguas inox inclinado | Inclined stainless steel roof flashing | *Solin inox incliné* + Collarín | Storm collar | Collettere **75mm**

5° - 25°

AISI 304	Ref.	4026713	4026715	4026716	4026717	4026718	4026720	4026721	4026722	4026723	4026724
	€ U.	1	1	1	1	1	1	1	1	1	1

25° - 45°

AISI 304	Ref.	4026730	4026731	4026732	4026733	4026734	4026736	4026737	4026738	4026740	4026741
	€ U.	1	1	1	1	1	1	1	1	1	1

45° - 60°

AISI 304	Ref.	4026745	4026746	4026748	4026749	4026751	4026753	4026755	4026756	4026757	4026759
	€ U.	1	1	1	1	1	1	1	1	1	1

Cubreaguas de plomo inclinado | Inclined lead roof flashing | *Solin en plomb incliné* + Collarín | Storm collar | Collettere **75mm**



5° - 25°

AISI 304 / Pb	Ref.	4007495	4007496	4019535	4013887	4007497	4007498	4007499	4007500	4007501	4007502
	€ U.	1	1	1	1	1	1	1	1	1	1

25° - 45°

AISI 304 / Pb	Ref.	4007506	4007507	4019538	4013888	4007508	4007509	4007510	4007511	4007512	4007513
	€ U.	1	1	1	1	1	1	1	1	1	1

45° - 60°

AISI 304 / Pb	Ref.	4021908	4021909	4021911	4021912	4021913	4021915	4008453	4008452	4014086	4014381
	€ U.	1	1	1	1	1	1	1	1	1	1

Cubreaguas atornillar | Screwed roof flashing | *Solin à visser*

ØD		80-180	200-300	350-700
		EPDM (< 150°C)	Ref. 5003944	5003946
	€ U.	1	1	1
	SILICONE (< 200°C)	Ref. 5005825	5005826	5005827
	€ U.	1	1	1



Kit fijación | Fastening kit | *Kit fixation*

ØD	80-180	200-700
	Ref.	4035361
€ U.	1	1

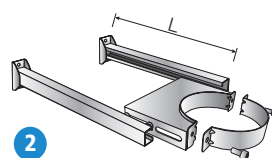
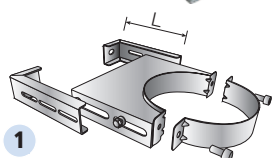
Cubreaguas residencial aluminio | Aluminum residential roof flashing | *Solin résidentiel en aluminium*

ØD		80 - 200	230 - 250	300 - 450	350 - 700
		EPDM (< 150°C)	Ref. 5005829	5005830	-
	€ U.	1	1	-	1
	SILICONE (< 200°C)	Ref. 5005832	5005833	5005834	-
	€ U.	1	1	1	-



Prolongación mural (2 u.) | Wall extension (2 u.) | *Rallonge murale (2 u.)*

AISI 304	L	50 mm	150 mm	250 mm	1000 mm
		Ref.	4019958	4019959	4019960
€ U.		1	1	1	1



Para abrazadera mural interior y exterior (Ø80-Ø250)
For interior and external wall bracket (Ø80-Ø250)
Pour collier support mural intérieur et extérieur (Ø80-Ø250)

Para abrazadera mural interior (Ø300-Ø650) y exterior (Ø80-Ø650)
For interior (Ø300-Ø650) and external wall bracket (Ø80-Ø650)
Pour collier support mural intérieur (Ø300-Ø650) et extérieur (Ø80-Ø650)

Ref.	2700868	Unidades de embalaje
€ U.	1	Packing units Unités d'emballage

300	350	400	450	500	550	600	650	700
250	300	350	400	450	500	550	600	650
180/300	200/350	250/400						
200	250	300	350	400	450	500	550	600

2700943	2700938	4009572	2500214	5002662	4009579	4009580	4009581	4009582
1	1	1	1	1	1	1	1	1

4026725	4026726	4026727	-	-	-	-	-	-
1	1	1	-	-	-	-	-	-

4026742	4026743	4026744	-	-	-	-	-	-
1	1	1	-	-	-	-	-	-

4026760	4026762	4026763	-	-	-	-	-	-
1	1	1	-	-	-	-	-	-

4007503	4007504	4007505	-	-	-	-	-	-
1	1	1	-	-	-	-	-	-

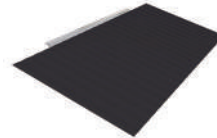
4007514	4007515	4007516	-	-	-	-	-	-
1	1	1	-	-	-	-	-	-

4014382	4021916	4021918	-	-	-	-	-	-
1	1	1	-	-	-	-	-	-

Babero | Bib | Bavette

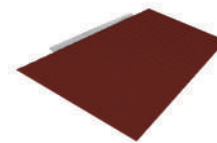
Accesorio para *
Accessory for
Accessoire pour

RAL 7022



Ref.	4025975
€ U.	1

RAL 8004



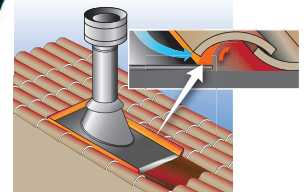
Ref.	4025978
€ U.	1

Espuma poliéster autoadhesiva para cubreaguas 1m

Self-adhesive polyester foam for roof flashing 1m
Mousse polyester autocollante pour solin 1m



Ref.	2045889
€ U.	1



Fijación forjado angular (2 unidades) | Angular forged fixation (2 units) | Fixation angulaire (2 unités)



GALVANIZADO
GALVANIZED
GALVANISÉ

1000 mm	
Ref.	4026057
€ U.	1

Kit prolongación forjado | Forged extension kit | Kit extension étage

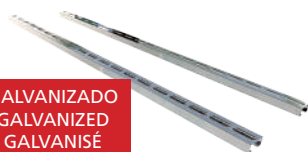


GALVANIZADO
GALVANIZED
GALVANISÉ

ØDi mm	80 - 100 - 125 - 130 - 150	180 - 200
Ref.	4026038	4026042
€ U.	1	1

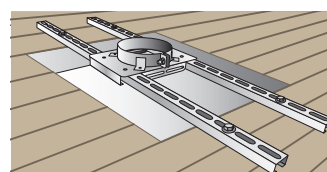
2 3 Consultar las diferentes opciones de soporte en la página 143 | For support options, see page 143 | Pour les options d'assistance, voir page 143.

Kit fijación reforzado universal (2 unidades) | Universal reinforced fastening kit (2 units) | Kit fixation renforcé universel (2 unités)



GALVANIZADO
GALVANIZED
GALVANISÉ

1000 mm	
Ref.	4026055
€ U.	1



Kit fijación soporte mural universal
Universal wall support kit
Kit support mural universel

SP - F - BD	Ø	80	100	110	125	130	150	180	200	230	250
DP - EI	Ø					80	100	125 - 130	150	180	200
CC	Ø				80/125	80/130	100/150	110/180	130/200		150/250
DP50	Ø									130	150

Collarín | Storm collar | Collettere



75 mm	AISI 304	Ref.	4019980	4019981	4019982	4021061	4019983	4019984	4019985	4019986	4019987	4019988
		€ U.	1	1	1	1	1	1	1	1	1	1

30 mm	AISI 304	Ref.	4019715	4019716	4019717	4022454	4019718	4019720	4019721	4019722	4019923	4019723
		€ U.	1	1	1	1	1	1	1	1	1	1

Rosetón | Finishing collar | Rosace



AISI 304	Ref.	4007378	2700643	4022496	4013910	2700632	2700633	4008224	4011484	4022498	4011483
	€ U.	1	1	1	1	1	1	1	1	1	1

Medidas | Measurements | Mesures

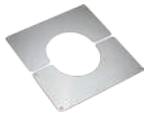
ØDe	200	200	200	230	230	250	300	300	350	350
-----	-----	-----	-----	-----	-----	-----	-----	-----	-----	-----

Embelecedor techo horizontal 1 pieza | Horizontal sloping roof trim 1 unit | Plaque de finition 1 pièce



AISI 304	Ref.	4014804	4015186	4019542	4022448	4014805	4014806	4015187	4015188	4012816	4013363
	€ U.	1	1	1	1	1	1	1	1	1	1

Embelecedor techo horizontal 2 piezas | Horizontal sloping roof trim 2 units | Plaque de finition 2 pièces



AISI 304	Ref.	4019832	4019833	4019835	4022449	4019836	4019837	4019838	4019839	4019840	4019841
	€ U.	1	1	1	1	1	1	1	1	1	1

Embelecedor techo inclinado 2 piezas | Sloping inclined roof trim 2 units | Plaque de finition toit incliné 2 pièces

5° - 25°

AISI 304	Ref.	4015180	4015181	4019543	4022447	4015182	4015183	4015184	4015185	4013415	4013417
	€ U.	1	1	1	1	1	1	1	1	1	1

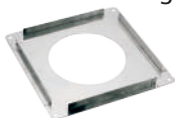
25° - 45°

AISI 304	Ref.	4013413	4015122	4019544	4022446	4015123	4015177	4015178	4015179	4012817	4013362
	€ U.	1	1	1	1	1	1	1	1	1	1

45° - 60°

AISI 304	Ref.	4017680	4017681	4017682	4017683	4017684	4017686	4017687	4017688	4017689	4017690
	€ U.	1	1	1	1	1	1	1	1	1	1

Distanciador fuego | Firebreak | Plaque écart au feu



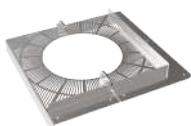
AISI 304	Ref.	4019112	4019113	4022464	4019114	4018288	4019115	4018697	4018698	4018699	4018700
	€ U.	1	1	1	1	1	1	1	1	1	1

Distanciador fuego ventilado | Ventilated firebreak | Plaque écart au feu ventilée



AISI 304	Ref.	4016780	4016781	4022462	4016782	4016783	4016784	4016785	4016786	4016428	4016407
	€ U.	1	1	1	1	1	1	1	1	1	1

Distanciador de fuego HETAS | Firebreak HETAS | Plaque écart au feu HETAS



AISI 304	Ref.	-	-	-	-	-	4016050	-	4016051	-	4016052
	€ U.	-	-	-	-	-	1	-	1	-	1

Ref.	4019984	Unidades de embalaje Packing units Unités d'emballage
€ U.	1	

300	350	400	450	500	550	600	650	700
250	300	350	400	450	500	550	600	650
180/300	200/350	250/400						
200	250	300	350	400	450	500	550	600

4019990	4019991	4021062	4033536	4030214	4033537	4033538	4033540	4033542
1	1	1	1	1	1	1	1	1

4019724	4019725	4019726	-	-	-	-	-	-
1	1	1	-	-	-	-	-	-

4011482	4022499	4022500	-	-	-	-	-	-
1	1	1	-	-	-	-	-	-

400	450	500	-	-	-	-	-	-
-----	-----	-----	---	---	---	---	---	---

4017666	4017667	4017668	-	-	-	-	-	-
1	1	1	-	-	-	-	-	-

4019853	4019854	4019855	-	-	-	-	-	-
1	1	1	-	-	-	-	-	-

4017653	4016684	4016685	-	-	-	-	-	-
1	1	1	-	-	-	-	-	-

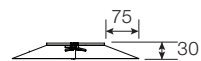
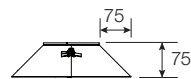
4016289	4016686	4017665	-	-	-	-	-	-
1	1	1	-	-	-	-	-	-

4017691	4017692	4017693	-	-	-	-	-	-
1	1	1	-	-	-	-	-	-

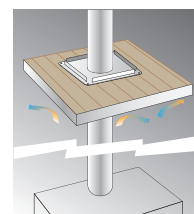
4018701	4019979	4040444	-	-	-	-	-	-
1	1	1	-	-	-	-	-	-

4016787	4019976	4029518	-	-	-	-	-	-
1	1	1	-	-	-	-	-	-

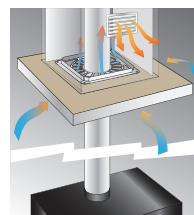
-	-	-	-	-	-	-	-	-
-	-	-	-	-	-	-	-	-



10



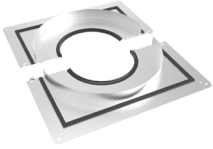
Distanciador fuego
Firebreak
Plaque écart au feu



Distanciador fuego ventilado
Ventilated firebreak
Plaque écart au feu ventilée

SP - F - BD	Ø	80	100	110	125	130	150	180	200	230	250
DP - EI	Ø					80	100	125 - 130	150	180	200
CC	Ø				80/125	80/130	100/150	110/180	130/200		150/250
DP50	Ø									130	150

Distanciador fuego estanco horizontal 2 piezas | Horizontal sealed firebreak 2 parts | *Plaque écart au feu étanche horizontale 2 pièces*



AISI 304	Ref.	-	-	-	-	4025575	4025579	4025580	4025581	4025582	4025583
	€ U.	-	-	-	-	-	1	1	1	1	1

Distanciador fuego estanco inclinado 1 pieza | Inclined sealed firebreak 1 part | *Plaque écart au feu étanche inclinée 1 pièce*

5° / 25°

AISI 304	Ref.	-	-	-	-	4025644	4025646	4025647	4025648	4025649	4025650
	€ U.	-	-	-	-	-	1	1	1	1	1

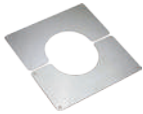
25° / 45°

AISI 304	Ref.	-	-	-	-	4025651	4025652	4025653	4025654	4025662	4025663
	€ U.	-	-	-	-	-	1	1	1	1	1

45° / 60°

AISI 304	Ref.	-	-	-	-	4025664	4025665	4025666	4025667	4025668	4025669
	€ U.	-	-	-	-	-	1	1	1	1	1

Embelcedor para distanciador fuego estanco horizontal 2 piezas | Horizontal sealed firebreak sloping roof trim 2 parts |



AISI 304	Ref.	-	-	-	-	4025768	4025790	4025792	4025793	4025794	4025795
	€ U.	-	-	-	-	-	1	1	1	1	1

Embelcedor para distanciador fuego estanco inclinado 2 piezas | Inclined sealed firebreak sloping roof trim 2 parts |

5° / 25°

AISI 304	Ref.	-	-	-	-	4025670	4025671	4025672	4025678	4025679	4025680
	€ U.	-	-	-	-	-	1	1	1	1	1

25° / 45°

AISI 304	Ref.	-	-	-	-	4025681	4025705	4025706	4025707	4025708	4025709
	€ U.	-	-	-	-	-	1	1	1	1	1

45° / 60°

AISI 304	Ref.	-	-	-	-	4025710	4025711	4025712	4025713	4025714	4025715
	€ U.	-	-	-	-	-	1	1	1	1	1

Aislante paso mural | Insulating wall bushing | *Coquille isolante*



L 330	Ref.	-	-	-	-	4026212	4026213	4026214	4026215	4026216	4026217
	€ U.	-	-	-	-	-	1	1	1	1	1

L 500	Ref.	-	-	-	-	4026218	4026219	4026220	4026221	4026222	4026223
	€ U.	-	-	-	-	-	1	1	1	1	1

L 660	Ref.	-	-	-	-	4026224	4026225	4026226	4026227	4026228	4026229
	€ U.	-	-	-	-	-	1	1	1	1	1

Ref.	4025579	Unidades de embalaje Packing units Unités d'emballage
€ U.	1	

300	350	400	450	500	550	600	650	700
250	300	350	400	450	500	550	600	650
180/300	200/350	250/400						
200	250	300	350	400	450	500	550	600

4034286	-	-	-	-	-	-	-	-
1	-	-	-	-	-	-	-	-

4034283	-	-	-	-	-	-	-	-
1	-	-	-	-	-	-	-	-

4034284	-	-	-	-	-	-	-	-
1	-	-	-	-	-	-	-	-

4034285	-	-	-	-	-	-	-	-
1	-	-	-	-	-	-	-	-

Plaque de finition pour plaque écart au feu étanche horizontale 2 pièces

4025796	-	-	-	-	-	-	-	-
1	-	-	-	-	-	-	-	-

Plaque de finition pour plaque écart au feu étanche inclinée 2 pièces

4025682	-	-	-	-	-	-	-	-
1	-	-	-	-	-	-	-	-

4025740	-	-	-	-	-	-	-	-
1	-	-	-	-	-	-	-	-

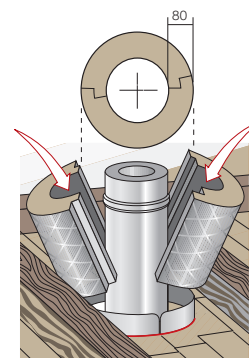
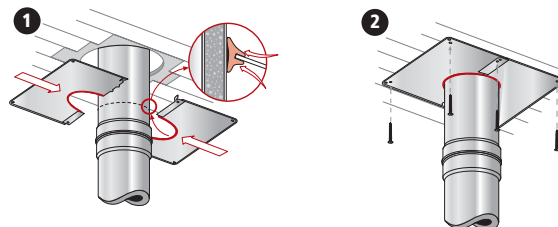
4025741	-	-	-	-	-	-	-	-
1	-	-	-	-	-	-	-	-

4025977	4040050	-	-	-	-	-	-	-
1	1	-	-	-	-	-	-	-

4025980	4040051	-	-	-	-	-	-	-
1	1	-	-	-	-	-	-	-

4025982	4040052	-	-	-	-	-	-	-
1	1	-	-	-	-	-	-	-

Montaje / Assembly / Montage



Puerta limpia | Cleaning door | *Trappe de ramonage*



Empotrable 14 x 20
Recessed 14 x 20
Encastrable 14 x 20

AISI	Ref.	5003920
304	€ U.	1



Con cajón empotrable 250mm
With recessed drawer 250mm
Avec boîtier encastrable 250mm

AISI	Ref.	5003919
304	€ U.	1



Puerta de ventilación
Ventilation door
Trappe de ventilation

AISI	Ref.	5003913
304	€ U.	1

Kit salida a techo + módulo DP | Rooftop kit + DW module | *Kit Sortie de toit + élément droit DP*

RAL 1015



	Ø	130	150	180	200	250
GALVA	Ref.	4025989	4025990	4025994	4025995	4025996
	€ U.	1	1	1	1	1

RAL 9005

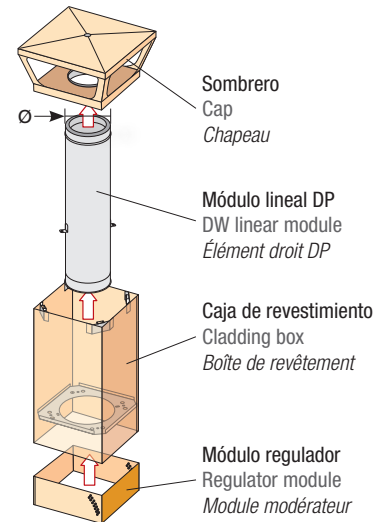


	Ø	130	150	180	200	250
GALVA	Ref.	4026000	4026001	4026002	4026003	4026004
	€ U.	1	1	1	1	1

RAL 7016



	Ø	130	150	180	200	250
GALVA	Ref.	4026005	4026007	4026008	4026010	4026011
	€ U.	1	1	1	1	1

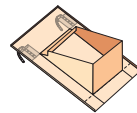


Otro color RAL | Other RAL colour | *Autre couleur RAL*

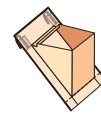


	Ø	130	150	180	200	250
GALVA	Ref.	4026012	4026014	4026015	4026016	4026017
	€ U.	1	1	1	1	1

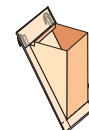
Base estanca salida a techo | Sealed rooftop base | *Embase étanche sortie de toit*



5°/25°



25°/45°



45°/60°

RAL 1015



GALVA	Ref.	4026018	4026019	4026020
	€ U.	1	1	1

RAL 9005



GALVA	Ref.	4026024	4026025	4026026
	€ U.	1	1	1

RAL 7016



GALVA	Ref.	4026021	4026022	4026023
	€ U.	1	1	1

Otro color RAL | Other RAL colour | *Autre couleur RAL*



GALVA	Ref.	4026027	4026029	4026030
	€ U.	1	1	1

Ref.	4025990	Unidades de embalaje
€ U.	1	Packing units
		Unités d'emballage

Kit salida a techo conducto en espera | Rooftop kit piping pending | Kit sortie de toit conduit en attente

RAL 1015



GALVA	Ref.	4025984
	€ U.	1

RAL 7016



GALVA	Ref.	4025986
	€ U.	1

RAL 9005

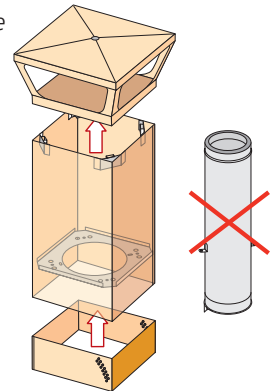


GALVA	Ref.	4025987
	€ U.	1

Otro color RAL | Other RAL colour | Autre couleur RAL



GALVA	Ref.	4025988
	€ U.	1

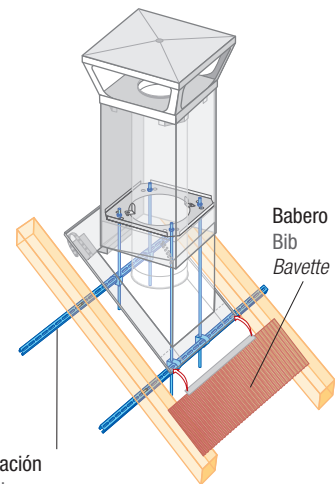


Kit de fijación | Fixing kit | Kit de fixation *



AISI 304	Ref.	4026036
	€ U.	1

Kit salida a techo con base estanca inclinada + kit de fijación
Rooftop kit with sealed base + fixing kit
Kit sortie de toit avec embase étanche + kit de fixation



* Kit de fijación
Fixing kit
Kit de fixation

10

Kit tapa ciega | Blind cap kit | Kit conduit à l'attente tampon plein



	RAL 9002	RAL 9011
Ref.	4025808	4025803
€ U.	1	1

Kit tapa recortable | Cut out cap kit | Kit conduit à l'attente tampon recoupable



2

	RAL 9002	RAL 9011
Ref.	4025809	4025804
€ U.	1	1

Tapa ciega | Blind cap | Tampon plein



	RAL 9002	RAL 9011
Ref.	4025806	4025801
€ U.	1	1

Tapa recortable | Cut out cap | Tampon recoupable



2

	RAL 9002	RAL 9011
Ref.	4025807	4025802
€ U.	1	1

